



Concentric Technology Solutions Inc

Testing Solutions for the Wireless Industry

TC-5915A Shield Box Data Sheet

TC-5915A Shield Box

Application

The TC-5915A Shield Box provides RF isolation and signal connections necessary for mobile testing. With RF coupling accessories and filtered I/O ports, the TC-5915A makes an ideal solution for testing mobiles and small RF devices for use on test benches of R&D, service, QC and manufacturing.

Features

- Reliable High RF Shielding up to 5.8GHz
- Manual operation
- Easily customizable to meet various test needs
- Shock Absorbers on lid

Specification

- Shielding Effectiveness : > 70dB, from DC to 2.5GHz,
**When optional Module M591502B installed.
- Inner Dimension : 220(W) x 280(D) x 170(H) mm
(Inner Dimension: 8.66(w) x 11.02(D) x 6.69(H) Inches)
- Outer Dimension: 310(W) x 475(D) x 220(H) mm
(Outer Dimension: 12.2(W) X 18.70(D) x 8.66(H) Inches)
- Weight : Approx. 7 kg



Front View



TC-5915A shown fitted
With Optional M591502B Module

SPECIFICATIONS SUBJECT TO CHANGE WITHOUT PRIOR NOTICE

Concentric Technology Solutions Inc.

TEL: 817-503-8862 FAX: 817-503-8866 Email : CTS-Sales@ctscorp-usa.com web site : [http:// www.ctscorp-usa.com](http://www.ctscorp-usa.com)

CR70627



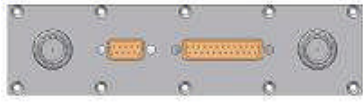

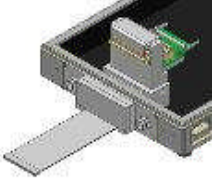
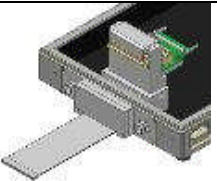
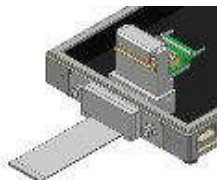
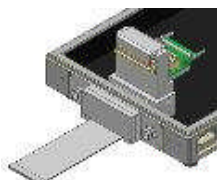
Concentric Technology Solutions Inc

Testing Solutions for the Wireless Industry

TC-5915A Shield Box Data Sheet

Optional I/O Modules for TC-5915A

Rear Module

Appliance	Module Number & Description
	<p>M591502B: Data Interface Module</p> <ul style="list-style-type: none"> - DB9(p) outside and DB9(s) inside, 1000pF Pi filter(Replaceable with USB port) - DB25(p) outside and DB25(s) inside, 1000pF Pi filter - 2 N(f) outside and SMA(f) inside - Data line Capacity : 100 VDC, 3 Amps max.
	<p>M591504A: WLAN CardBus Controller Module for Desktop PC</p> <ul style="list-style-type: none"> - Shielding Effectiveness : >55dB at 2.4GHz, >50dB at 5.8GHz - 100Pin, Shielded Flat Cable, 10pF Pi filter, for CardBus or Mini PCI - 2 N(f) outside and SMA(f) inside - Supports Hot Swap function (CBC)
	<p>M591504B: WLAN CardBus Extender Module for Notebook</p> <ul style="list-style-type: none"> - Shielding Effectiveness : >55dB at 2.4GHz, >50dB at 5.8GHz - 100pin, Shielded Flat Cable, 10pF pi filter, for CardBus or Mini PCI - 2 N(f) outside and SMA(f) inside
	<p>M591512A: Mini PCI Express Module for Desktop PC</p> <ul style="list-style-type: none"> - Shielding Effectiveness : >55dB at 2.4GHz, >50dB at 5.8GHz - Flat Cable, for Mini PCI Express - 4 SMA(f) outside and inside
	<p>M591512B: Express Card Module 34/54 for Desktop PC</p> <ul style="list-style-type: none"> - Shielding Effectiveness : >55dB at 2.4GHz, >50dB at 5.8GHz - Flat Cable, for Express Card 34/54 - 4 SMA(f) outside and inside
	<p>M591512C: Express Card Module 34/54 for Notebook</p> <ul style="list-style-type: none"> - Shielding Effectiveness : >55dB at 2.4GHz, >50dB at 5.8GHz - - Flat Cable, for Express Card 34/54 - 4 SMA(f) outside and inside

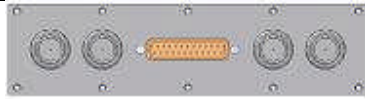
SPECIFICATIONS SUBJECT TO CHANGE WITHOUT PRIOR NOTICE



Concentric Technology Solutions Inc

Testing Solutions for the Wireless Industry

TC-5915A Shield Box Data Sheet



M591505A: Data Interface Module

- 4 N(f) outside and SMA(f) inside
- DB25(p) outside and DB25(s) inside, 1000pF Pi filter

N/A

M591505A-02 : Data Interface Module

- 4 SMA(f) outside and SMA(f) inside
- 1 DB25(p) outside and DB25(s) inside, 1000pF Pi filter
- 1 USB2.0 A type outside and inside(Replaceable with DB9 port)

N/A

M591505D : Data Interface Module

- 4 SMA(f) outside and SMA(f) inside
- 1 DB25(p) outside and DB25(s) inside, 1000pF Pi filter
- 1 RJ-45 outside and inside, 10pF Pi filter, for LAN(Replaceable with USB port or DB9)

N/A

M591507B : A/C Power Module

- 2 N(f) outside and SMA(f) inside
- 1 DB9(p) outside and DB9(s) inside, 1000pF Pi filter(Replaceable with USB port)
- 1 A/C Inlet(f) outside, Outlet inside(m)

Side Module

Appliance	Module Number & Description
	<p>M591531A: RJ-45 Interface Module</p> <ul style="list-style-type: none"> - RJ-45 outside and inside, 10pF Pi filter, for LAN - Data line Capacity : 1.5 Amps max.
	<p>M591532A: DC Power interface Module</p> <ul style="list-style-type: none"> - DC Power Jack outside and inside - Data line Capacity : 100VDC, 3 Amps max.
	<p>M591533A: DB9 Interface Module</p> <ul style="list-style-type: none"> - DB9(p) outside and DB9(s) inside, 1000pF Pi filter - Data line Capacity : 100VDC, 3 Amps max.

SPECIFICATIONS SUBJECT TO CHANGE WITHOUT PRIOR NOTICE

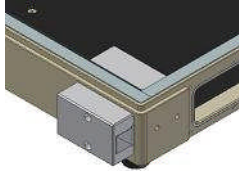


Concentric Technology Solutions Inc

Testing Solutions for the Wireless Industry

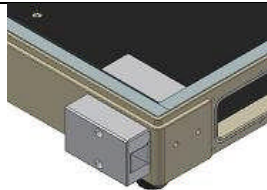
TC-5915A Shield Box Data Sheet

M591534A: USB2.0 Interface Module



- 2 USB Type A Ports Inside and Outside
- CMF & EMI Filter, up to USB 2.0 full-speed
- Data line Capacity : 1 Amps max.
(Frequency range : 200MHz ~ 2.4GHz)
- ※ Only for USB to USB connection

M591535A: RF Interface Module



- 2 SMA(f) outside and SMA(f) inside

Ordering Information

TC-5915A, RF Shield Box without optional I/O Modules.

Optional I/O Modules for rear 5915A

M591501A, Blank Module

M591502B, M591504A, M591504B, M591505A, M591507B, M591505A-02, M591505D, M591512A, M591512B, M591512C

Optional I/O Modules for Side 5915A

M591531A, M591532A, M591533A, M591534A, M591535A

Optional Antenna Couplers for 5915A

TC-93020A: Flat Type Antenna Coupler

TC-93030B: Flat Type Antenna Coupler

TC-93020A: Flat Type Antenna Coupler

TC-93031A: Flat Type Antenna Coupler

TC-93034A: Flat Type Antenna Coupler

TC-93023B: Flat Type Antenna Coupler

❑ SPECIAL NOTE

① In case of ordering TC-5915A Shield Box only. It will be provided without any module installed. Optional Rear and Side Module are available at an additional cost. For pricing on the optional modules, please request a quote.

SPECIFICATIONS SUBJECT TO CHANGE WITHOUT PRIOR NOTICE

Concentric Technology Solutions Inc.

TEL: 817-503-8862 FAX: 817-503-8866 Email : CTS-Sales@ctscorp-usa.com web site : [http:// www.ctscorp-usa.com](http://www.ctscorp-usa.com)
CR70627