



TC-5915AP Shield Box

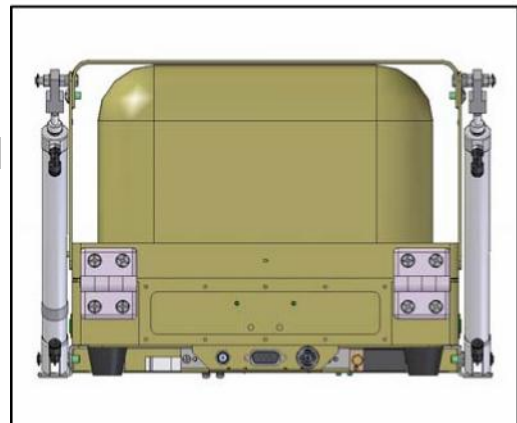
Application

TC-5915AP Shield Box provides RF isolation and signal connections necessary for mobile testing. With the RF coupling accessory and filtered control ports, the TC-5915AP makes an ideal solution for testing mobiles, Bluetooth, DAB/DMB, RFID, Zigbee and small RF devices on the test benches of R&D, service, QC and manufacturing.



Features

- Reliable High RF Shielding for testing products up to 5.8GHz
- Pneumatic control of lid open-close and optional test fixture motions
- Easily customizable to meet various testing needs
- Shock Absorbers on lid
- Red and Green LED's for Pass/Fail indication
- EMI filters on all data ports and power line
- Remote operation by RS-232C



Specification

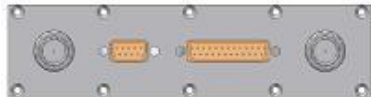
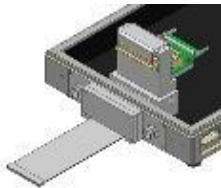
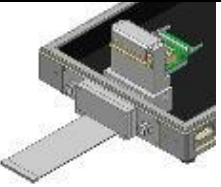
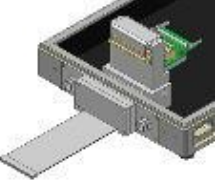
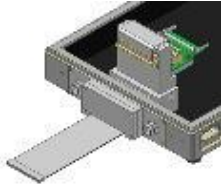
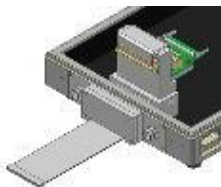
- Shielding Effectiveness : > 70dB, from DC to 2.5GHz, including M591502B
- Data line capacity : 100 VDC, 3 Amps max
- Remote control : RS-232C, 3 wire, DB9(p)
- Input air pressure : 5 bar to 10 bar
- Main air connector : 6mm OD hose, one-touch push-on fitting
- Fixture control air connector : 4mm OD hose, one-touch push-on fitting
- Inner Dimension : 220(W) x 280(D) x 170(H) mm
- Outer Dimension : 413(W) x 430(D) x 268(H) mm
- Weight : approx. 9 kg
 - Packed Weight : approx. 11 kg

SPECIFICATIONS SUBJECT TO CHANGE WITHOUT PRIOR NOTICE



Optional I/O Modules for TC-5915AP

Rear Module

Appliance	Module Number & Description
	M591502B: Data Interface Module <ul style="list-style-type: none">- DB9(p) outside and DB9(s) inside, 1000pF Pi filter(Replaceable with USB port)- DB25(p) outside and DB25(s) inside, 1000pF Pi filter- 2 N(f) outside and SMA(f) inside- Data line Capacity : 100 VDC, 3 Amps max.
	M591504A: WLAN CardBus Controller Module for Desktop PC <ul style="list-style-type: none">- Shielding Effectiveness : >55dB at 2.4GHz, >50dB at 5.8GHz- 100Pin, Shielded Flat Cable, 10pF Pi filter, for CardBus or Mini PCI- 2 N(f) outside and SMA(f) inside- Supports Hot Swap function (CBC)
	M591504B: WLAN CardBus Extender Module for Notebook <ul style="list-style-type: none">- Shielding Effectiveness : >55dB at 2.4GHz, >50dB at 5.8GHz- 100pin, Shielded Flat Cable, 10pF pi filter, for CardBus or Mini PCI- 2 N(f) outside and SMA(f) inside
	M591512A: Mini PCI Express Module for Desktop PC <ul style="list-style-type: none">- Shielding Effectiveness : >55dB at 2.4GHz, >50dB at 5.8GHz- Flat Cable, for Mini PCI Express- 4 SMA(f) outside and inside
	M591512B: Express Card Module 34/54 for Desktop PC <ul style="list-style-type: none">- Shielding Effectiveness : >55dB at 2.4GHz, >50dB at 5.8GHz- Flat Cable, for Express Card 34/54- 4 SMA(f) outside and inside
	M591512C: Express Card Module 34/54 for Notebook <ul style="list-style-type: none">- Shielding Effectiveness : >55dB at 2.4GHz, >50dB at 5.8GHz -- Flat Cable, for Express Card 34/54- 4 SMA(f) outside and inside

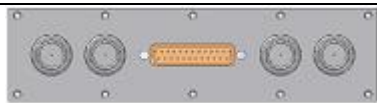
SPECIFICATIONS SUBJECT TO CHANGE WITHOUT PRIOR NOTICE



Concentric Technology Solutions Inc

Testing Solutions for the Wireless Industry

TC-5915AP Shield Box Data Sheet



M591505A: Data Interface Module

- 4 N(f) outside and SMA(f) inside
- DB25(p) outside and DB25(s) inside, 1000pF Pi filter

N/A

M591505A-02 : Data Interface Module

- 4 SMA(f) outside and SMA(f) inside
- 1 DB25(p) outside and DB25(s) inside, 1000pF Pi filter
- 1 USB2.0 A type outside and inside(Replaceable with DB9 port)

N/A

M591505D : Data Interface Module

- 4 SMA(f) outside and SMA(f) inside
- 1 DB25(p) outside and DB25(s) inside, 1000pF Pi filter
- 1 RJ-45 outside and inside, 10pF Pi filter, for LAN(Replaceable with USB port or DB9)

N/A

M591507B : A/C Power Module

- 2 N(f) outside and SMA(f) inside
- 1 DB9(p) outside and DB9(s) inside, 1000pF Pi filter(Replaceable with USB port)
- 1 A/C Inlet(f) outside, Outlet inside(m)

Side Module

Appliance	Module Number & Description
	M591531A: RJ-45 Interface Module <ul style="list-style-type: none"> - RJ-45 outside and inside, 10pF Pi filter, for LAN - Data line Capacity : 1.5 Amps max.
	M591532A: DC Power interface Module <ul style="list-style-type: none"> - DC Power Jack outside and inside - Data line Capacity : 100VDC, 3 Amps max.
	M591533A: DB9 Interface Module <ul style="list-style-type: none"> - DB9(p) outside and DB9(s) inside, 1000pF Pi filter - Data line Capacity : 100VDC, 3 Amps max.

SPECIFICATIONS SUBJECT TO CHANGE WITHOUT PRIOR NOTICE

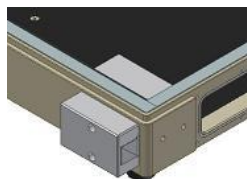


Concentric Technology Solutions Inc

Testing Solutions for the Wireless Industry

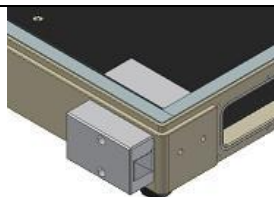
TC-5915AP Shield Box Data Sheet

M591534A: USB2.0 Interface Module



- 2 USB Type A Ports Inside and Outside
- CMF & EMI Filter, up to USB 2.0 full-speed
- Data line Capacity : 1 Amps max.
(Frequency range : 200MHz ~ 2.4GHz)
- ※ Only for USB to USB connection

M591535A: RF Interface Module



- 2 SMA(f) outside and SMA(f) inside
-

Ordering Information

TC-5915AP, Pneumatic RF Shield Box without optional I/O Modules.

Optional I/O Modules for REAR 5915A

M591501A, Blank Module

M591502B, M591504A, M591504B, M591505A, M591507B, M591505A-02, M591505D, M591512A, M591512B, M591512C

Optional I/O Modules for SIDE 5915A

M591531A, M591532A, M591533A, M591534A, M591535A

Optional Antenna Couplers for 5915A

TC-93020A: Flat Type Antenna Coupler

TC-93030B: Flat Type Antenna Coupler

TC-93020A: Flat Type Antenna Coupler

TC-93031A: Flat Type Antenna Coupler

TC-93034A: Flat Type Antenna Coupler

TC-93023B: Flat Type Antenna Coupler

SPECIFICATIONS SUBJECT TO CHANGE WITHOUT PRIOR NOTICE